

ITEM	DESC.	Q'TY	MATERIAL	TREATMENT	REMARK
1	METAL SHELL	1	STEEL	NICKEL PLATED	SCSI-III
2	INSULATOR	1	THERMOPLASTIC PBT UL 94V-0	MOLDED BLACK	"
3	CONTACT	68	PHOSPHOR BRONZE	GOLD PLATED AT CONTACT AREA, 100-200u" TIN/LEAD AT TERMINATION OVER 50-80u" NICKEL OVERALL	"
4	BRACKET	1	ZINC ALLOY #3	NICKEL PLATED	"
5	SPACER	1	THERMOPLASTIC PBT UL 94V-0	MOLDED BLACK	"
6	BLADE	1	PHOSPHOR BRONZE	NICKEL PLATED	"
7	METAL SHELL	1	STEEL	NICKEL PLATED	D-SUB
8	FRONT INSULATOR (FEMALE)	1	THERMOPLASTIC PBT UL 94V-0	MOLDED BLACK	"
9	REAR INSULATOR	1	THERMOPLASTIC PBT UL 94V-0	MOLDED BLACK	"
10	CONTACT	25	PHOSPHOR BRONZE	GOLD PLATED AT CONTACT AREA, 100-200u" TIN/LEAD AT TERMINATION OVER 50-80u" NICKEL OVERALL	"
11	BOARD LOCK	2	PHOSPHOR BRONZE	TIN/LEAD PLATED	"
12	BLADE	1	PHOSPHOR BRONZE	NICKEL PLATED	"
13	BRACKET	1	THERMOPLASTIC PBT UL 94V-0	MOLDED BLACK	
14	BOARD LOCK	2	BRASS	TIN/LEAD PLATED	

1. PROD. NO.: DM1135* - H*

CONTACT GOLD PLATED AREA:

- 1 = GOLD FLASH
- 2 = 20u"
- 3 = 30u"
- 6 = 10u"

FOXCONN HON HAI PRECISION INDUSTRY CO., LTD.
TAIPEI, TAIWAN, R.O.C

APPD.:	TITLE: DUAL PORT-PUPA D-SUB/SCSI-III 25/68 F/F
CHKD.:	PROD. SERIES: DM1135*-H1/H2
	DWG. NO.: 301-0500-645
DR.:	REV.: B SHEET: 1 OF 1

B		
A	IC961523	
REV.	ECN NO.	APPD.

SPECIFICATIONS:

PERFORMANCE:

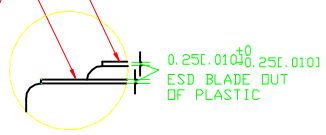
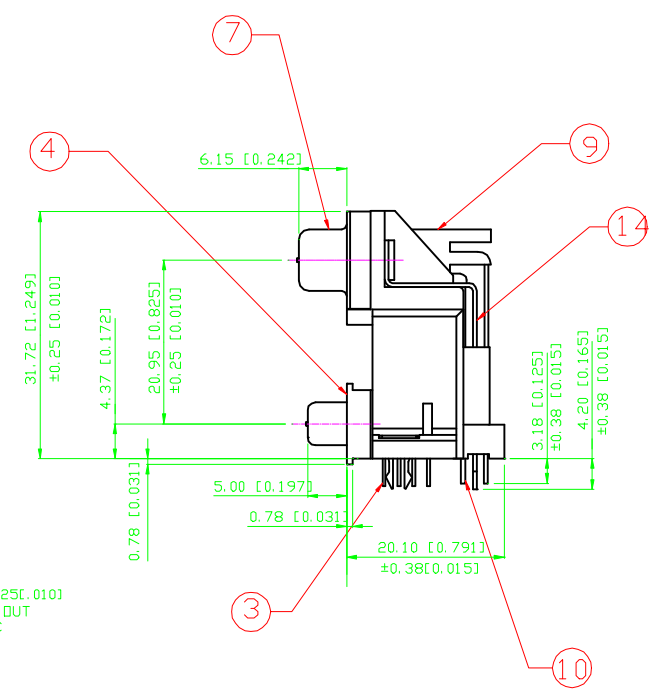
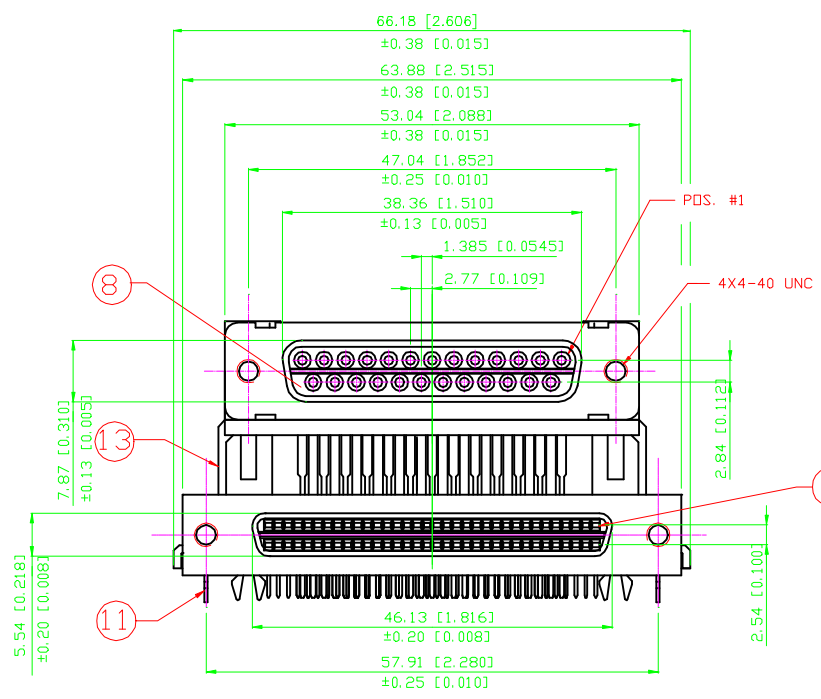
		SCSI-II/III	D-SUB
ELECTRICAL CHARACTERISTICS:	CONTACT CURRENT RATING	1 AMPERES	3 AMPERES
	CONTACT RESISTANCE	35 MILLIOHMS (MAX.)	15 MILLIOHMS (MAX.)
	DIELECTRIC WITHSTANDING VOLTAGE, SEA LEVEL	500 VAC (MIN.)	1000 VAC (MIN.)
	INSULATION RESISTANCE	1000 MEGOHMS (MIN.)	5000 MEGOHMS (MIN.)
MECHANICAL CHARACTERISTICS:	CONTACT ENGAGEMENT FORCE	5 OZS (MAX.)	12 OZS (MAX.)
	CONTACT SEPARATION FORCE	0.6 OZS (MIN.)	0.75 OZS (MIN.)
	CONTACT RETENTION FORCE	3 LBS (MIN.)	9 LBS (MIN.)
	CONNECTOR MATING FORCE	----	3/4 LB * NO. OF CONTACT
	OPERATION TEMPERATURE	-55 J TO +85 J	-55 J TO +85
	FEMALE SCREWLOCK TORQUE	----	5 INCH-LBS

FOXCONN HON HAI PRECISION INDUSTRY CO., LTD.
TAIPEI, TAIWAN, R.O.C

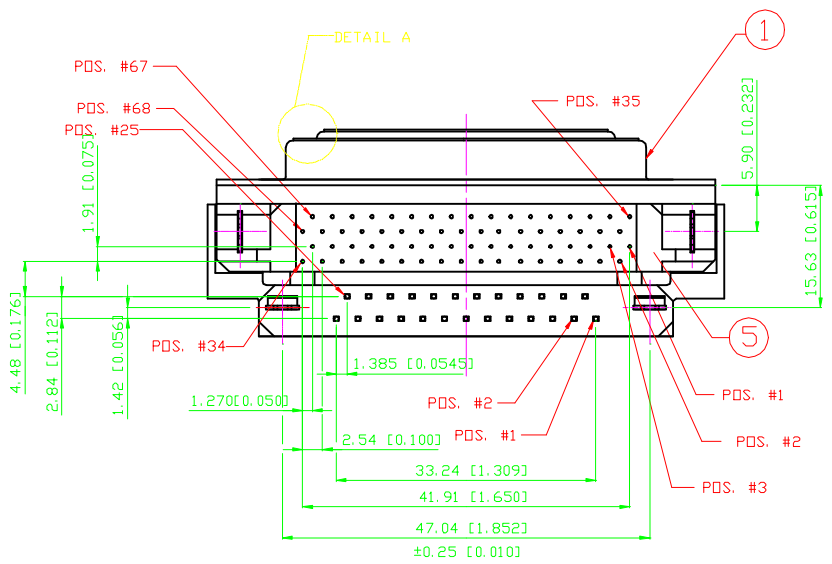
D		
C	IC961524	
B	C81115	
A	DWG. REL.	
REV.	ECN NO.	APPD.

APPD.:	TITLE: DUAL PORT-DM SERIES SPECIFICATIONS	
CHKD.:	PROD. SERIES: DM1135*-H1/H2	
	DWG. NO.: 301-0300-031	
DR.:	REV.: D	SHEET: 1 OF 1

REV.	ECN NO.	APPD.
A	IC961523	
B	IC982285	



DETAIL A
SCALE 2:1

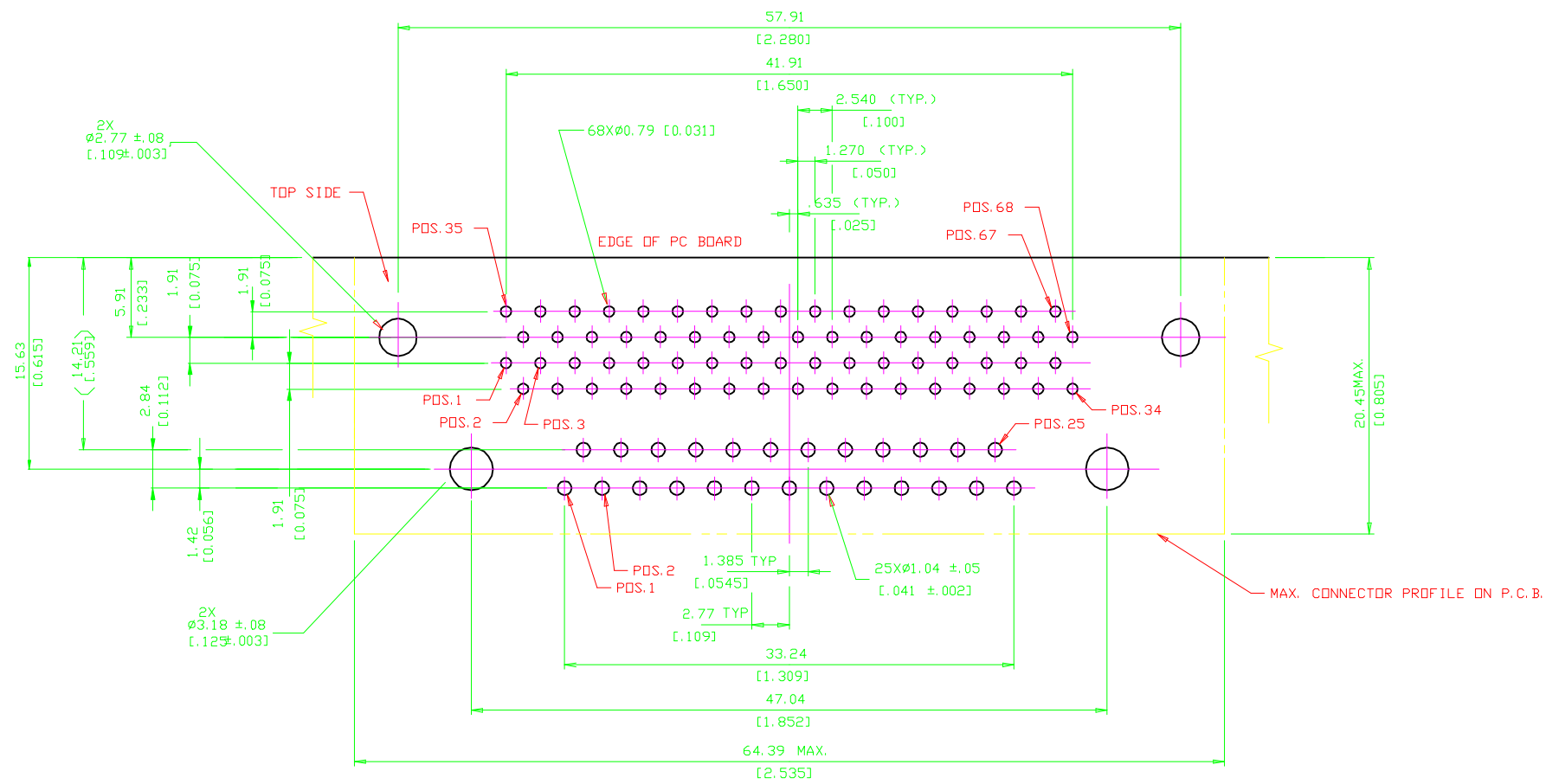


- NOTE:**
1. DIMENSIONS ARE IN METRIC, BRACKETED DIMENSIONS ARE INCHES EQUIVALENTS.
 2. INTERMATEABLE WITH STANDARD 25 PIN D-SUB AND 68 POSITION SCSI-III MALE CONNECTOR.
 3. RECOMMENDED P.C. BOARD MOUNTING HOLE DIA. $2.77 \pm 0.08 [1.09 \pm 0.003]$, THICKNESS IS $1.57 \pm 0.20 [0.062 \pm 0.008]$

X.±	X'.±	UNITS	MM	NAME (INTENDED USE)	FOXCONN
.X±	.X'±	MAT'L		CUSTOMER	HON HAI PRECISION IND. CO., LTD. TAIPEI, TAIWAN, R.O.C.
.XX±	.XX'±			PART NO. (INTENDED USE)	TITLE:
.XXX±	.XXX'±	FINISH		DM1135*-H1	DUAL PORT, D-SUB/SCSI-III 25/68, F/F
		Q'TY		APPD:	DWG NO.:
				CHKD:	301-0100-488
				DR:	SCALE SHEET REV.
					2/3 1/2 B

THESE DRAWINGS AND SPECIFICATIONS ARE THE PROPERTY OF HON HAI PRECISION IND. CO., LTD. AND SHALL NOT BE REPRODUCED, COPIED OR USED IN ANY MANNER WITHOUT THE PRIOR WRITTEN CONSENT OF HON HAI PRECISION IND. CO., LTD.

REV.	ECN NO.	APPD.
A	IC961523	
B	IC982284	



NOTES:
 1 ALL THE BRACKETED DIMENSIONS ARE IN INCHES.
 2 RECOMMENDED P.C.B. THICKNESS 1.57 [0.062]

X.±	X°.±	UNITS	MM	NAME(INTENDED USE)	FOXCONN
.X±	.X°.±	MAT'L		CUSTOMER	HON HAI PRECISION IND. CO.,LTD. TAIPEI, TAIWAN, R.O.C.
.XX±	.XX°.±			PART NO.(INTENDED USE)	TITLE:
.XXX±	.XXX°.±	FINISH		DM1135*-H1/H2	DUAL PORT D-SUB 25P/ SCSI III P.C.B LAYOUT
THESE DRAWINGS AND SPECIFICATIONS ARE THE PROPERTY OF HON HAI PRECISION IND. CO., LTD. AND SHALL NOT BE REPRODUCED, COPIED OR USED IN ANY MANNER WITHOUT THE PRIOR WRITTEN CONSENT OF HON HAI PRECISION IND. CO., LTD.				APPD:	DWG NO.:
		Q'TY		CHKD:	301-0400-113
				DR:	SCALE SHEET REV. 1/3 1/1 B